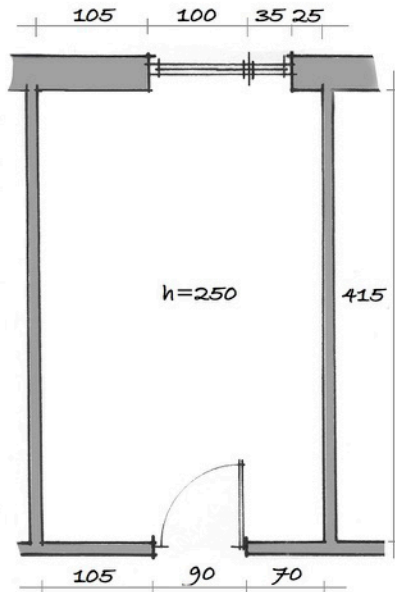


## ASK THE ARCHITECT – SUBMIT YOUR SPECIFIC REQUIREMENT

You can send a letter or e-mail to the addresses listed in our contact information. Your letter or e-mail should include:

- **A DRAWING – GROUND PLAN** with wall, window and door measurements, parapets height and measurements of all abnormalities on the floors, walls and ceiling, and also ceiling height measurements.
- **A DRAWING – CROSS SECTION** if the space in question is an attic apartment or it has an irregularly shaped ceiling. If the ceiling is straight and regular, ceiling height measurements will suffice.
- **PHOTOGRAPHS** of the space; preferably separate photographs of each wall with switches, sockets, lights and parapets clearly visible. The photographs should include as many details as possible.
- **AN ACCURATE DESCRIPTION** of your requirements and preferences, the purpose of the space, the number and age of its occupants or users and any important information that might help finding the best solution.
- **CONTACT INFORMATION**, preferably your mobile phone number and e-mail address.

## PRESENTATION OF THE PROBLEM - FOR EXAMPLE: ... or, what to send



### Characterisation of space:

- entrance from the common corridor
- output in the ground floor atrium
- east location
- electrical outlets are next to the window
- long walls are thin, non-structural
- there is a real parquet on the floor

### Description of the main requirements:

- for a girl aged 15
- bed should be 120 cm wide
- as many wardrobes as possible
- plenty of space for books
- desk width of at least 120 cm
- as many drawers as possible
- a place for TV

## EXAMPLE SOLUTIONS: ... or, what you get

A high-school girl's room should have a space for studying and also for resting and hanging out with friends. On one side we put two tall wardrobes with a 120 cm wide and 200 cm long bed between them. With added pillows the bed can also be used as a sofa. On the opposite side there are a work table and a bookcase with drawers at the bottom. In the space between we can put a medium-size TV set.

